

ADDITIONAL TRACT INFORMATION

The successful bidder(s) of tracts containing planted winter wheat will be required to buy the existing crop at a rate of \$139/acre. This will be a cost in addition to the purchase price of the property, which can be paid prior to closing, or at closing. The existing crop was planted with approximately 257 lbs/acre of 46-0-0, and 84 lbs/acre of 12.9-41.9-0-4.7(s) starter blend. Crop history has consistently been wheat/corn/sunflowers.

TRACT 1: Currently has 148.82+- acres of planted winter wheat; the balance of this tract had corn planted for the 2021 growing season.

TRACT 2: Currently has 152.75+- acres of planted winter wheat; the balance of this tract had sunflowers planted for the 2021 growing season.

TRACT 3: This tract contained 240+- acres of corn for the 2021 growing season; the balance of this tract has been utilized as pasture but holds the potential for more crop acres. A Mid Dakota rural water tap is placed in the pasture portion.

TRACT 4: Currently has 153.94+- acres of planted winter wheat; the balance of this tract had sunflowers planted for the 2021 growing season.

TRACT 5: This tract contains 68.54+- acres of crop land which was wheat during the 2021 growing season. The balance of this tract is a combination of pasture, which holds the potential for breaking, and a yard site with improvements. Improvements include approximately 100,000+- bushels of grain storage, a Quonset, and numerous smaller outbuildings.

TRACT 6: Currently this tract contains 105.33+- acres of planted winter wheat; the balance of this tract had wheat as the 2021 crop.

TRACT 7: This tract contained 156.54+- acres of corn for the 2021 growing season.

TRACT 8: This tract contained 155.51+- acres of sunflowers, and 150.71 acres of wheat during the 2021 growing season.

TRACT 9: This tract was planted to sunflowers for the 2021 growing season, and totals 139.68+- crop acres.

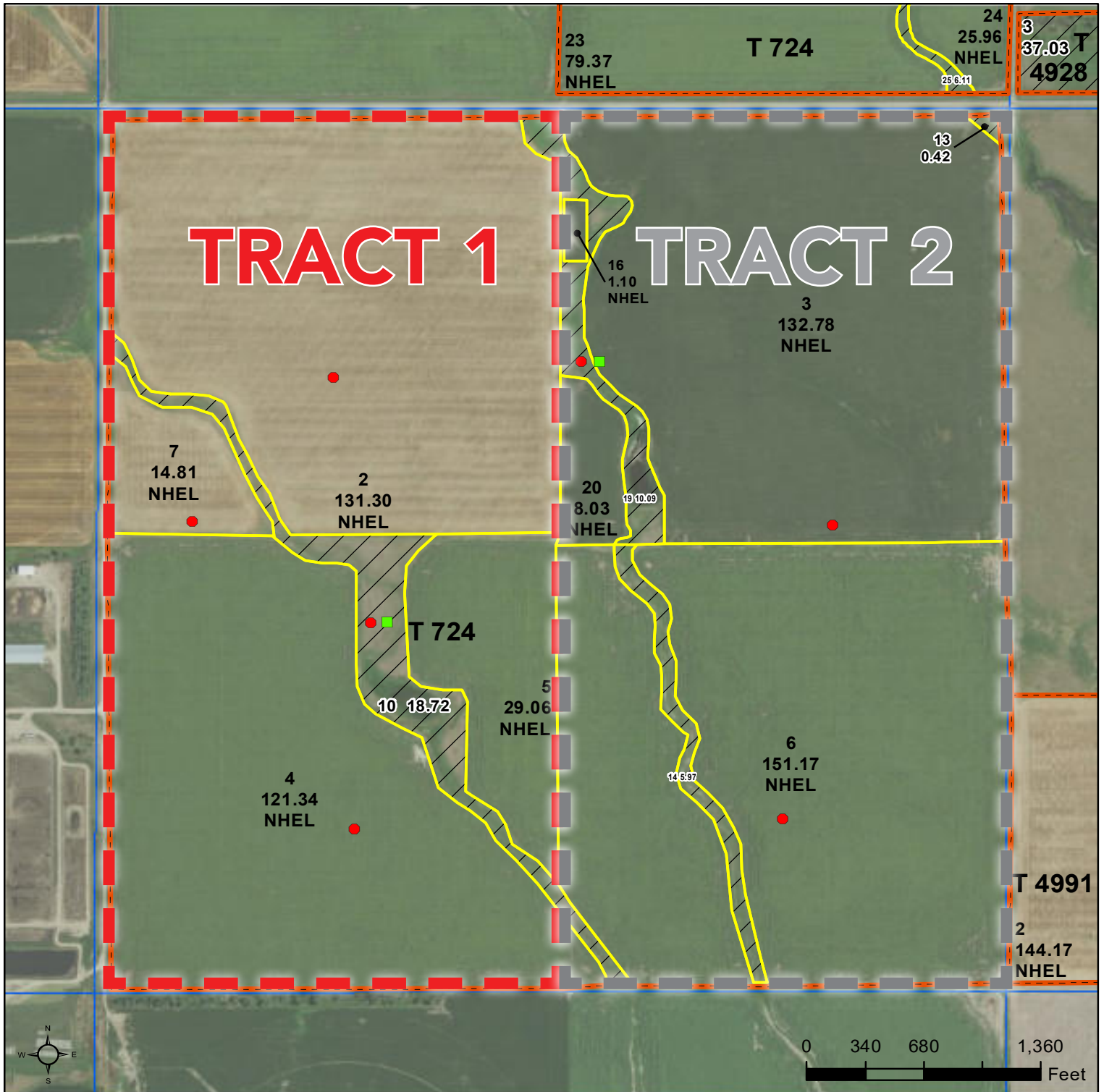
TRACT 10: This tract had wheat as the 2021 crop and totals 154.49+- crop acres.

Information is obtained from sources deemed reliable, but not guaranteed. FSA maps and additional information is contained in the bidder's packets for reference.

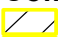



United States
Department of
Agriculture




Sully County, South Dakota



Common Land Unit  Tract Boundary
 PLSS

 Non-Cropland
 Cropland

Wetland Determination Identifiers

-  Restricted Use
-  Limited Restrictions
-  Exempt from Conservation Compliance Provisions

2022 Program Year

Map Created September 28, 2021

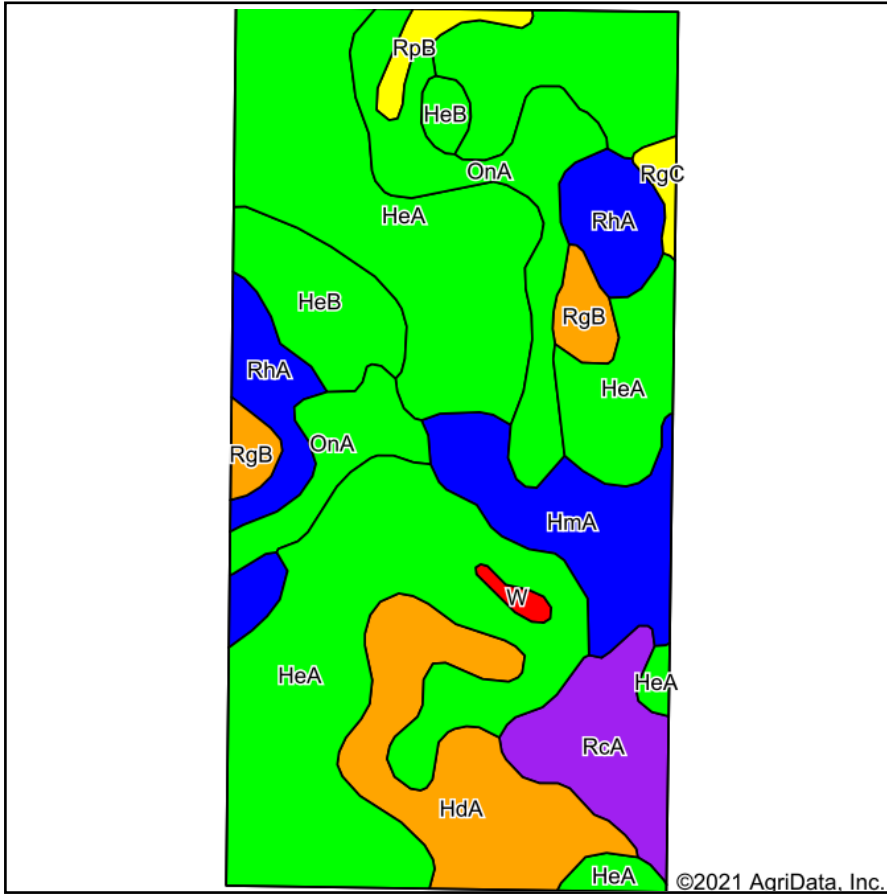
Farm 4758

10-114N-76W-Sully

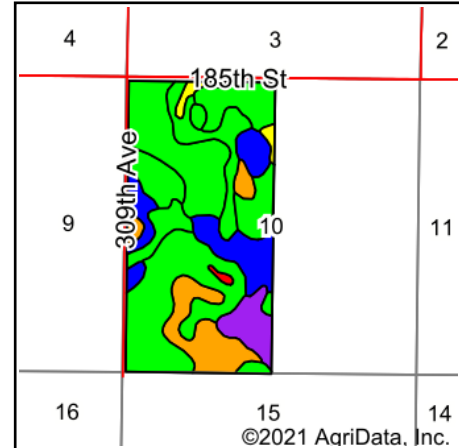
United States Department of Agriculture (USDA) Farm Service Agency (FSA) maps are for FSA Program administration only. This map does not represent a legal survey or reflect actual ownership; rather it depicts the information provided directly from the producer and/or National Agricultural Imagery Program (NAIP) imagery. The producer accepts the data 'as is' and assumes all risks associated with its use. USDA-FSA assumes no responsibility for actual or consequential damage incurred as a result of any user's reliance on this data outside FSA Programs. Wetland identifiers do not represent the size, shape, or specific determination of the area. Refer to your original determination (CPA-026 and attached maps) for exact boundaries and determinations or contact USDA Natural Resources Conservation Service (NRCS).

TRACT 1

Soils Map



Soils data provided by USDA and NRCS.



State: **South Dakota**
 County: **Sully**
 Location: **10-114N-76W**
 Township: **East Sully**
 Acres: **313.87**
 Date: **10/10/2021**



Maps Provided By:



Area Symbol: SD119, Soil Area Version: 23							
Code	Soil Description	Acres	Percent of field	PI Legend	Non-Irr Class *c	Productivity Index	*n NCCPI Soybeans
HeA	Highmore silt loam, 0 to 2 percent slopes	156.13	49.7%		IIc	92	57
OnA	Mobridge silt loam, 0 to 2 percent slopes	34.03	10.8%		IIc	94	59
HdA	Highmore-DeGrey silt loams, 0 to 2 percent slopes	30.71	9.8%		IIc	76	48
HmA	Highmore-Walke silt loams, 0 to 2 percent slopes	22.86	7.3%		IIc	85	62
RhA	Eakin-Raber complex, 0 to 2 percent slopes	21.29	6.8%		IIc	83	54
RcA	Raber-Cavo loams, 0 to 2 percent slopes	17.45	5.6%		IIc	60	42
HeB	Highmore silt loam, 2 to 6 percent slopes	17.36	5.5%		Ile	91	56
RgB	Eakin-Raber complex, 2 to 6 percent slopes	7.02	2.2%		Ile	76	53
RpB	Raber-Peno loams, 2 to 6 percent slopes	3.65	1.2%		Ile	65	51
RgC	Raber-Eakin complex, 6 to 9 percent slopes	2.02	0.6%		IIle	61	51
W	Water	1.35	0.4%		VIII	0	
Weighted Average					2.03	86.4	*n 55.2

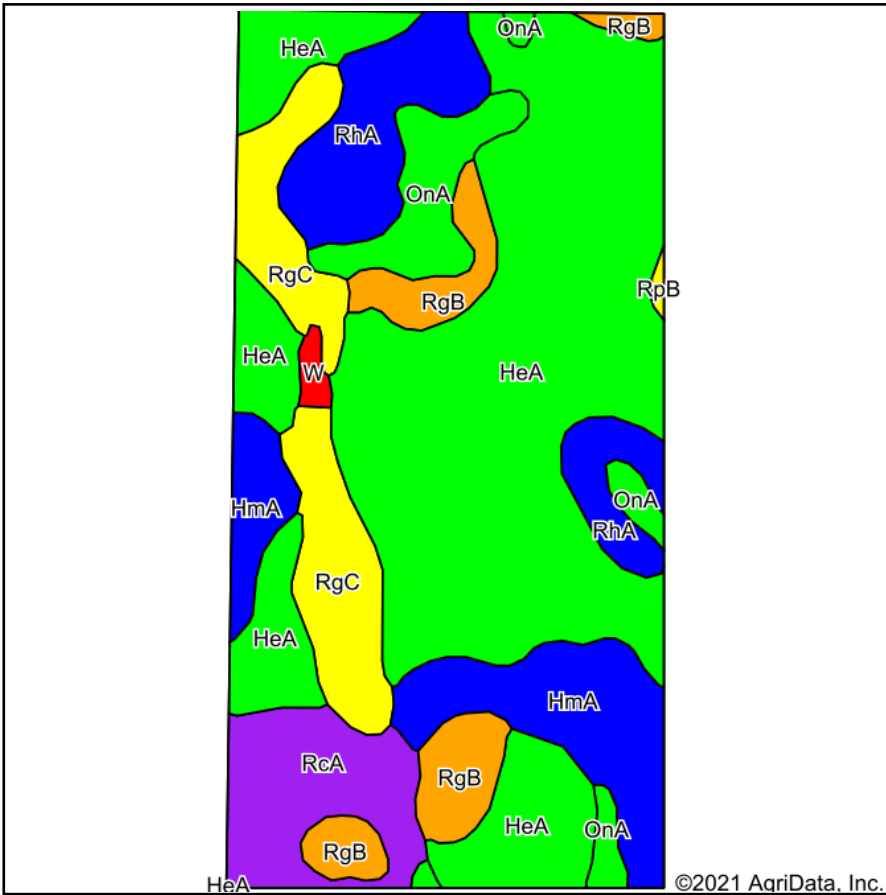
*n: The aggregation method is "Weighted Average using all components"

*c: Using Capabilities Class Dominant Condition Aggregation Method

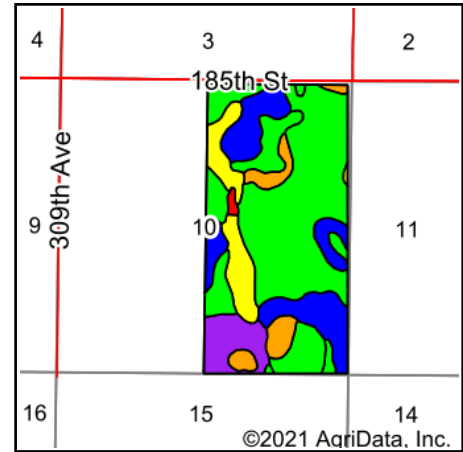
Soils data provided by USDA and NRCS.

TRACT 2

Soils Map



Soils data provided by USDA and NRCS.



State: **South Dakota**
 County: **Sully**
 Location: **10-114N-76W**
 Township: **East Sully**
 Acres: **306.59**
 Date: **10/10/2021**



Maps Provided By:

 CUSTOMIZED ONLINE MAPPING
 © AgriData, Inc. 2021 www.AgriDataInc.com



Area Symbol: SD119, Soil Area Version: 23

Code	Soil Description	Acres	Percent of field	PI Legend	Non-Irr Class *c	Productivity Index	*n NCCPI Soybeans
HeA	Highmore silt loam, 0 to 2 percent slopes	154.26	50.3%		IIc	92	57
HmA	Highmore-Walke silt loams, 0 to 2 percent slopes	31.19	10.2%		IIc	85	62
RgC	Raber-Eakin complex, 6 to 9 percent slopes	30.33	9.9%		IIIe	61	51
RhA	Eakin-Raber complex, 0 to 2 percent slopes	28.23	9.2%		IIc	83	54
RcA	Raber-Cavo loams, 0 to 2 percent slopes	22.53	7.3%		IIc	60	42
RgB	Eakin-Raber complex, 2 to 6 percent slopes	19.72	6.4%		Ile	76	53
OnA	Mobridge silt loam, 0 to 2 percent slopes	18.25	6.0%		IIc	94	59
W	Water	1.58	0.5%		VIII	0	
RpB	Raber-Peno loams, 2 to 6 percent slopes	0.50	0.2%		Ile	65	51
Weighted Average					2.13	83.6	*n 55.1

*n: The aggregation method is "Weighted Average using all components"

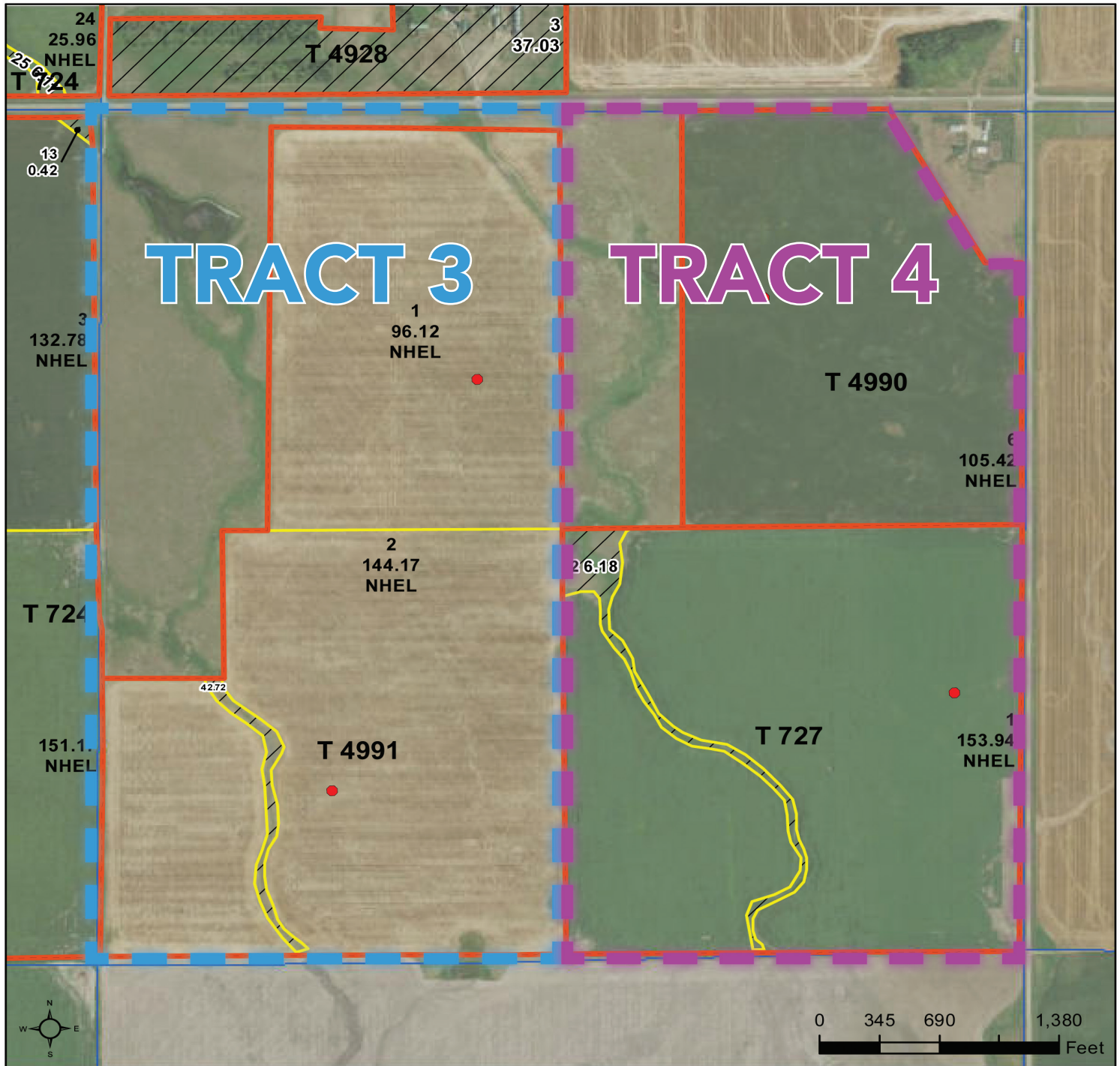
*c: Using Capabilities Class Dominant Condition Aggregation Method

Soils data provided by USDA and NRCS.



United States
Department of
Agriculture

Sully County, South Dakota



Common Land Unit

- Non-Cropland
- Cropland



Tract Boundary



PLSS

Wetland Determination Identifiers

- Restricted Use
- Limited Restrictions
- Exempt from Conservation Compliance Provisions

2022 Program Year

Map Created September 28, 2021

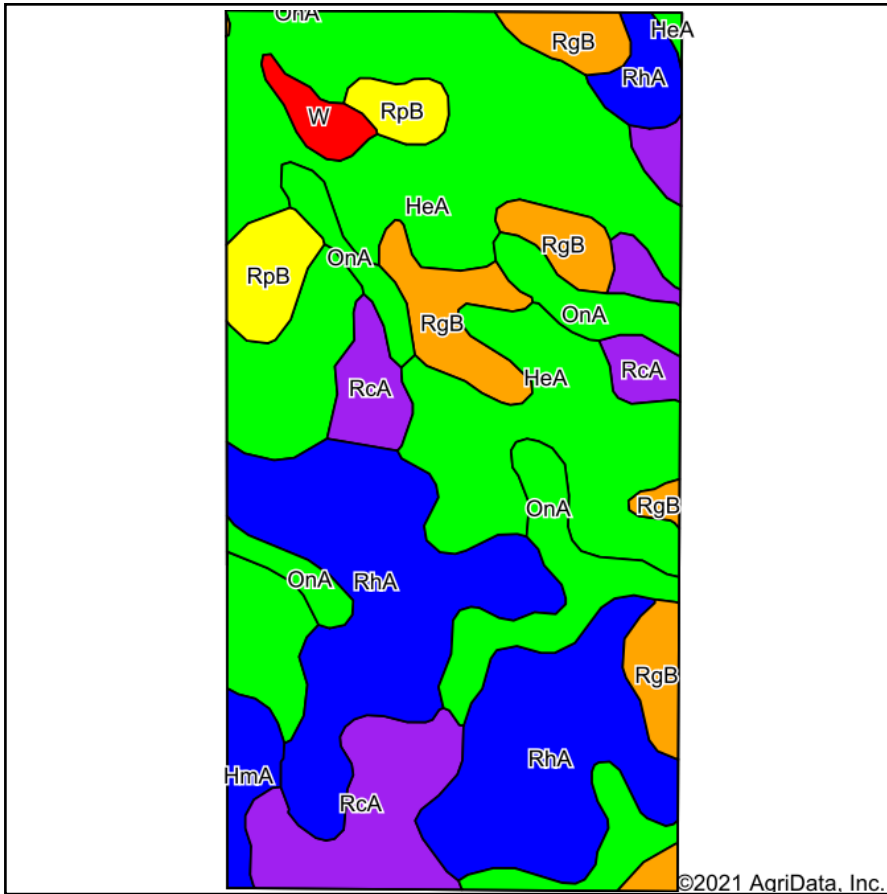
Farm 4758

11-114N-76W-Sully

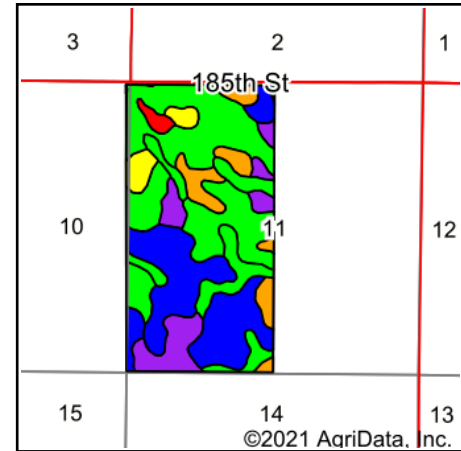
United States Department of Agriculture (USDA) Farm Service Agency (FSA) maps are for FSA Program administration only. This map does not represent a legal survey or reflect actual ownership; rather it depicts the information provided directly from the producer and/or National Agricultural Imagery Program (NAIP) imagery. The producer accepts the data 'as is' and assumes all risks associated with its use. USDA-FSA assumes no responsibility for actual or consequential damage incurred as a result of any user's reliance on this data outside FSA Programs. Wetland identifiers do not represent the size, shape, or specific determination of the area. Refer to your original determination (CPA-026 and attached maps) for exact boundaries and determinations or contact USDA Natural Resources Conservation Service (NRCS).

TRACT 3

Soils Map



Soils data provided by USDA and NRCS.



State: **South Dakota**
 County: **Sully**
 Location: **11-114N-76W**
 Township: **East Sully**
 Acres: **323.37**
 Date: **10/10/2021**



Maps Provided By:



Area Symbol: SD119, Soil Area Version: 23

Code	Soil Description	Acres	Percent of field	PI Legend	Non-Irr Class *c	Productivity Index	*n NCCPI Soybeans
HeA	Highmore silt loam, 0 to 2 percent slopes	119.21	36.9%		IIc	92	57
RhA	Eakin-Raber complex, 0 to 2 percent slopes	85.00	26.3%		IIc	83	54
OnA	Mobridge silt loam, 0 to 2 percent slopes	36.03	11.1%		IIc	94	59
RcA	Raber-Cavo loams, 0 to 2 percent slopes	34.17	10.6%		IIc	60	42
RgB	Eakin-Raber complex, 2 to 6 percent slopes	27.60	8.5%		Ile	76	53
RpB	Raber-Peno loams, 2 to 6 percent slopes	11.58	3.6%		Ile	65	51
HmA	Highmore-Walke silt loams, 0 to 2 percent slopes	5.75	1.8%		IIc	85	62
W	Water	4.03	1.2%		VIII	0	
Weighted Average					2.07	82.9	*n 53.7

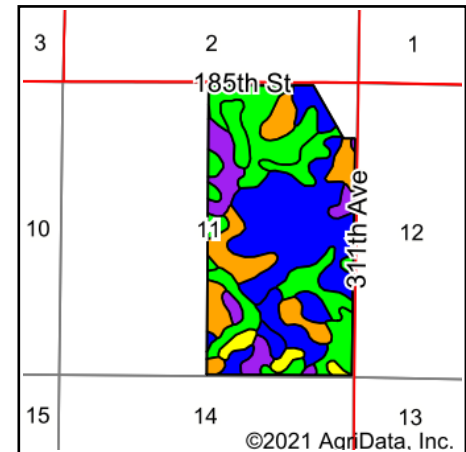
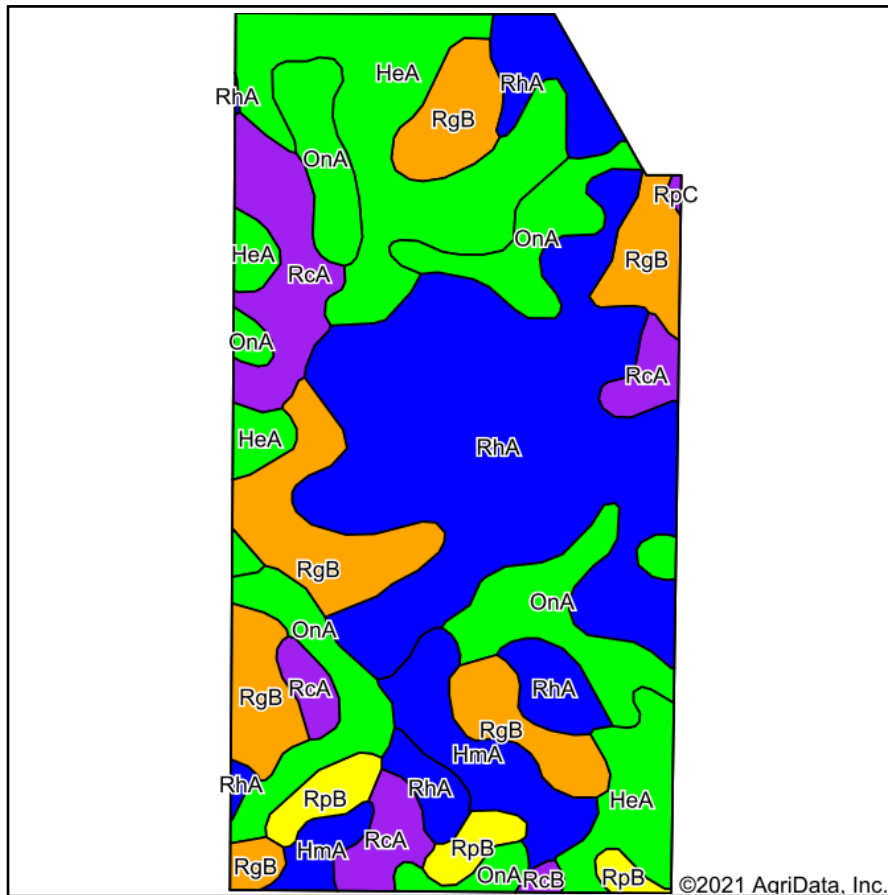
*n: The aggregation method is "Weighted Average using all components"

*c: Using Capabilities Class Dominant Condition Aggregation Method

Soils data provided by USDA and NRCS.

TRACT 4

Soils Map



State: **South Dakota**
 County: **Sully**
 Location: **11-114N-76W**
 Township: **East Sully**
 Acres: **307.09**
 Date: **10/10/2021**



Maps Provided By:



Soils data provided by USDA and NRCS.

Area Symbol: SD119, Soil Area Version: 23							
Code	Soil Description	Acres	Percent of field	PI Legend	Non-Irr Class *c	Productivity Index	*n NCCPI Soybeans
RhA	Eakin-Raber complex, 0 to 2 percent slopes	103.12	33.6%		IIc	83	54
HeA	Highmore silt loam, 0 to 2 percent slopes	52.87	17.2%		IIc	92	57
OnA	Mobridge silt loam, 0 to 2 percent slopes	49.02	16.0%		IIc	94	59
RgB	Eakin-Raber complex, 2 to 6 percent slopes	47.87	15.6%		Ile	76	53
RcA	Raber-Cavo loams, 0 to 2 percent slopes	26.77	8.7%		IIc	60	42
HmA	Highmore-Walke silt loams, 0 to 2 percent slopes	17.22	5.6%		IIc	85	62
RpB	Raber-Peno loams, 2 to 6 percent slopes	9.04	2.9%		Ile	65	51
RcB	Raber-Cavo loams, 2 to 6 percent slopes	0.88	0.3%		Ile	57	43
RpC	Raber-Peno loams, 6 to 9 percent slopes	0.30	0.1%		IIle	52	51
Weighted Average					2.00	82.7	*n 54.4

*n: The aggregation method is "Weighted Average using all components"

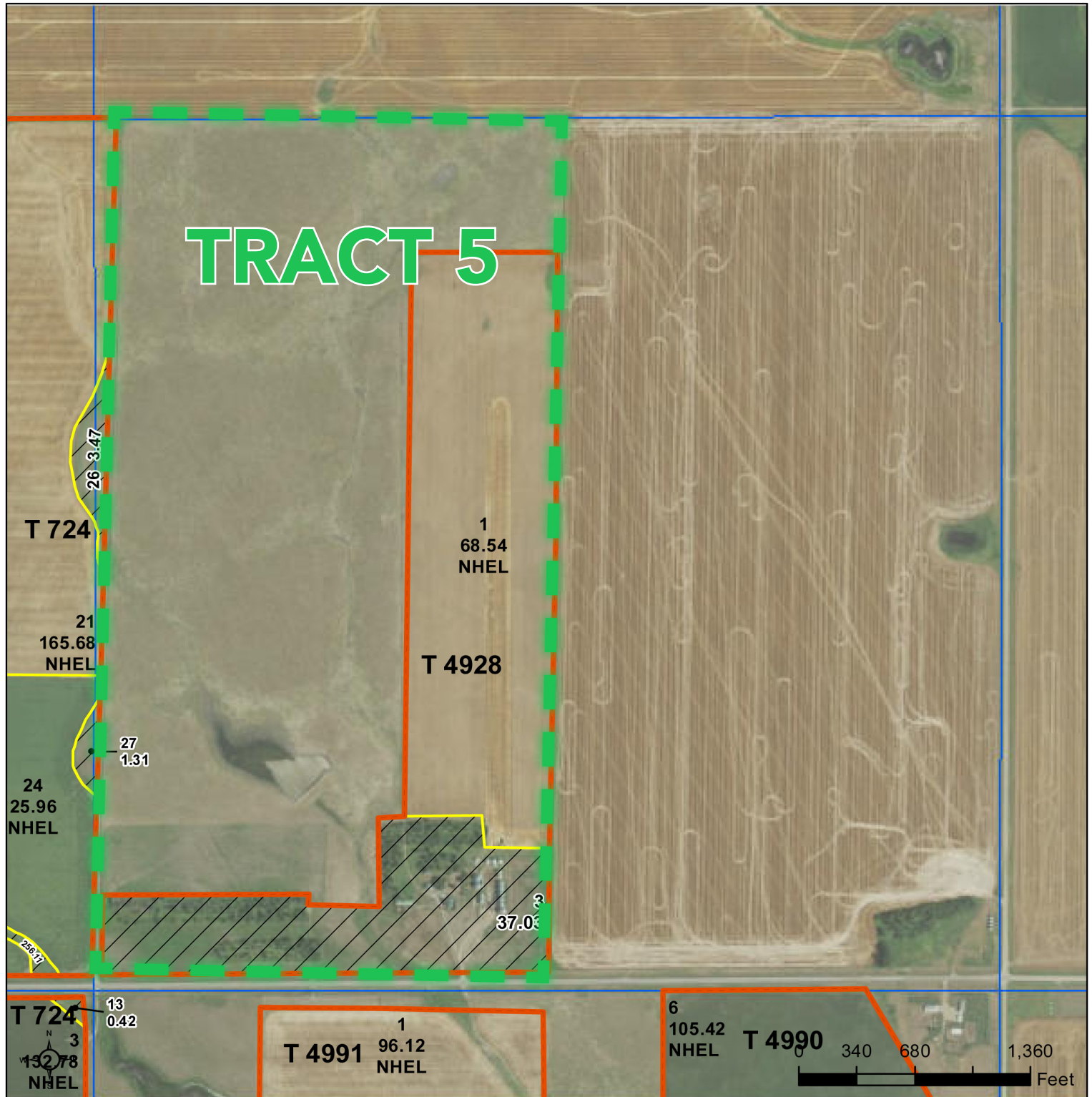
*c: Using Capabilities Class Dominant Condition Aggregation Method

Soils data provided by USDA and NRCS.





United States
Department of
Agriculture

Sully County, South Dakota







Common Land Unit  Tract Boundary

 Non-Cropland
 Cropland

 PLSS

Wetland Determination Identifiers

-  Restricted Use
-  Limited Restrictions
-  Exempt from Conservation
-  Compliance Provisions

2022 Program Year

Map Created September 28, 2021

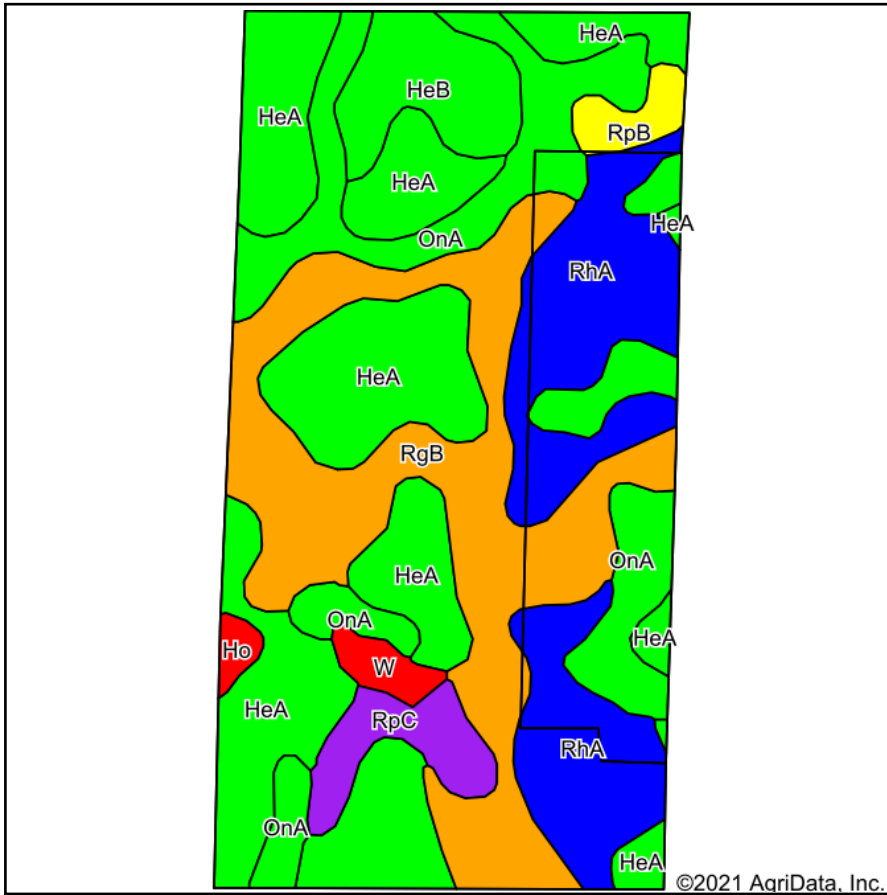
Farm 4758

2-114N-76W-Sully

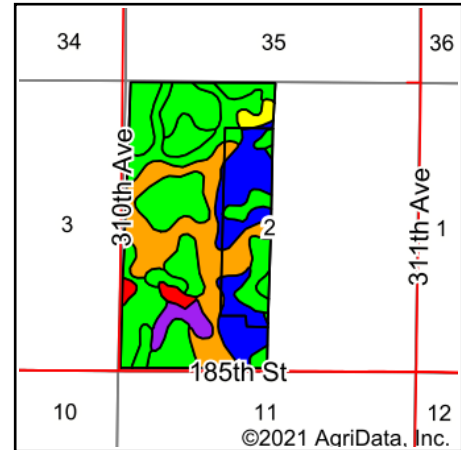
United States Department of Agriculture (USDA) Farm Service Agency (FSA) maps are for FSA Program administration only. This map does not represent a legal survey or reflect actual ownership; rather it depicts the information provided directly from the producer and/or National Agricultural Imagery Program (NAIP) imagery. The producer accepts the data 'as is' and assumes all risks associated with its use. USDA-FSA assumes no responsibility for actual or consequential damage incurred as a result of any user's reliance on this data outside FSA Programs. Wetland identifiers do not represent the size, shape, or specific determination of the area. Refer to your original determination (CPA-026 and attached maps) for exact boundaries and determinations or contact USDA Natural Resources Conservation Service (NRCS).

TRACT 5

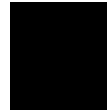
Soils Map



Soils data provided by USDA and NRCS.



State: **South Dakota**
 County: **Sully**
 Location: **2-11N-76W**
 Township: **East Sully**
 Acres: **307.66**
 Date: **10/10/2021**



Maps Provided By:



© AgriData, Inc. 2021

www.AgriDataInc.com



Area Symbol: SD119, Soil Area Version: 23

Code	Soil Description	Acres	Percent of field	PI Legend	Non-Irr Class *c	Productivity Index	*n NCCPI Soybeans
HeA	Highmore silt loam, 0 to 2 percent slopes	96.09	31.2%		IIc	92	57
RgB	Eakin-Raber complex, 2 to 6 percent slopes	71.12	23.1%		Ile	76	53
RhA	Eakin-Raber complex, 0 to 2 percent slopes	52.00	16.9%		IIc	83	54
OnA	Mobridge silt loam, 0 to 2 percent slopes	51.89	16.9%		IIc	94	59
HeB	Highmore silt loam, 2 to 6 percent slopes	16.00	5.2%		Ile	91	56
RpC	Raber-Peno loams, 6 to 9 percent slopes	10.30	3.3%		IIIe	52	51
RpB	Raber-Peno loams, 2 to 6 percent slopes	4.75	1.5%		Ile	65	51
W	Water	3.65	1.2%		VIII	0	
Ho	Hoven silt loam, 0 to 1 percent slopes	1.86	0.6%		VIc	15	5
Weighted Average					2.13	83.8	*n 54.6

*n: The aggregation method is "Weighted Average using all components"

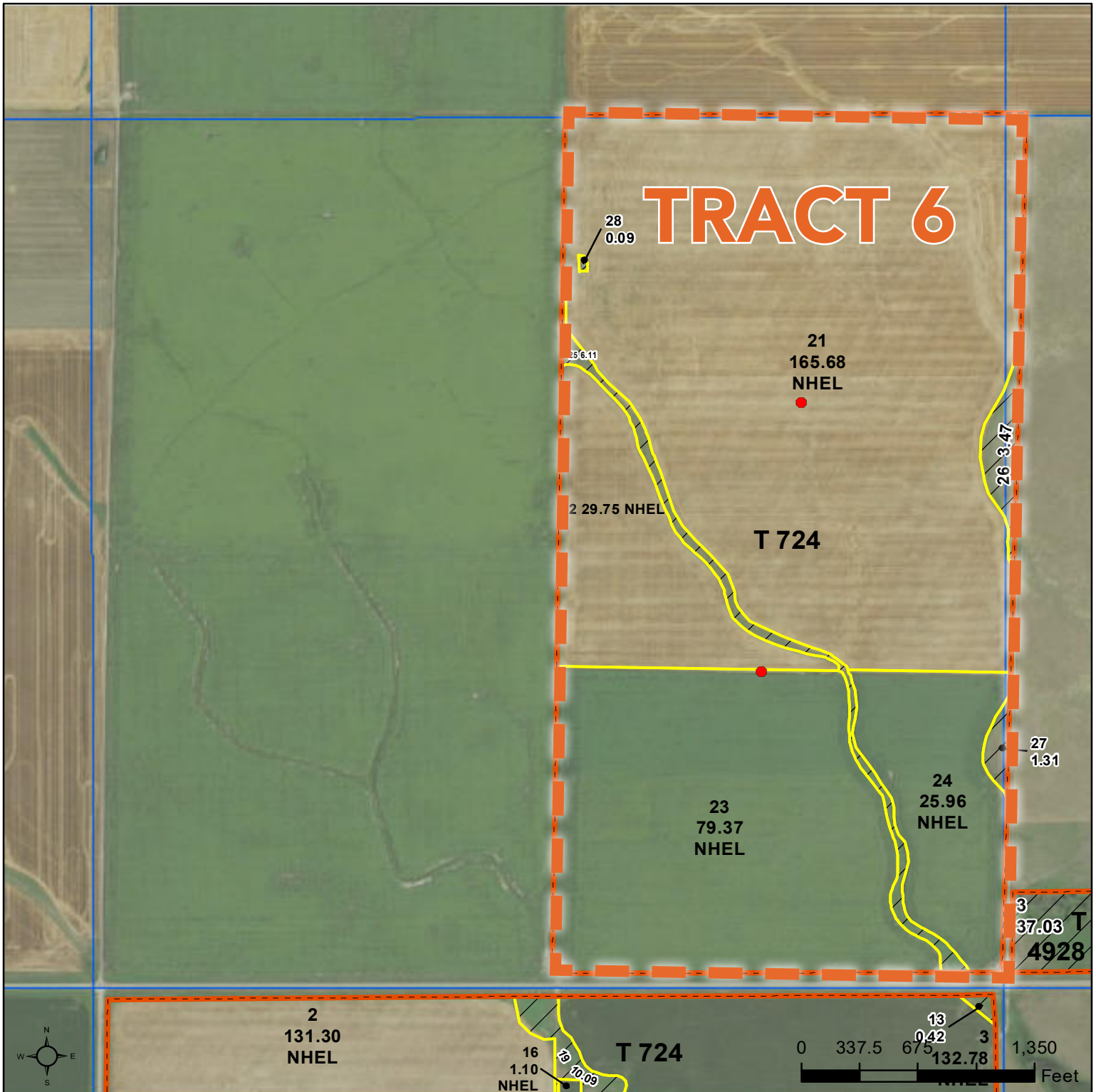
*c: Using Capabilities Class Dominant Condition Aggregation Method

Soils data provided by USDA and NRCS.



United States
Department of
Agriculture

Sully County, South Dakota



Common Land Unit

	Tract Boundary
	Non-Cropland
	Cropland
	PLSS

Wetland Determination Identifiers

- Restricted Use
- Limited Restrictions
- Exempt from Conservation Compliance Provisions

2022 Program Year

Map Created September 28, 2021

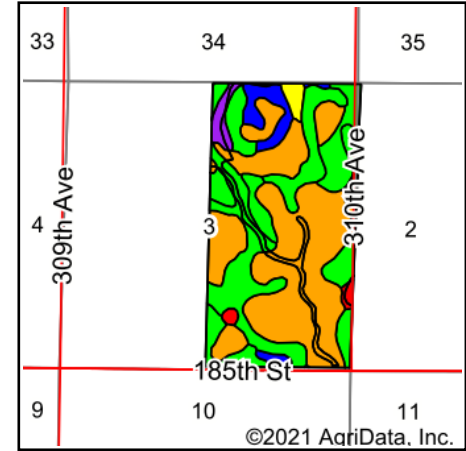
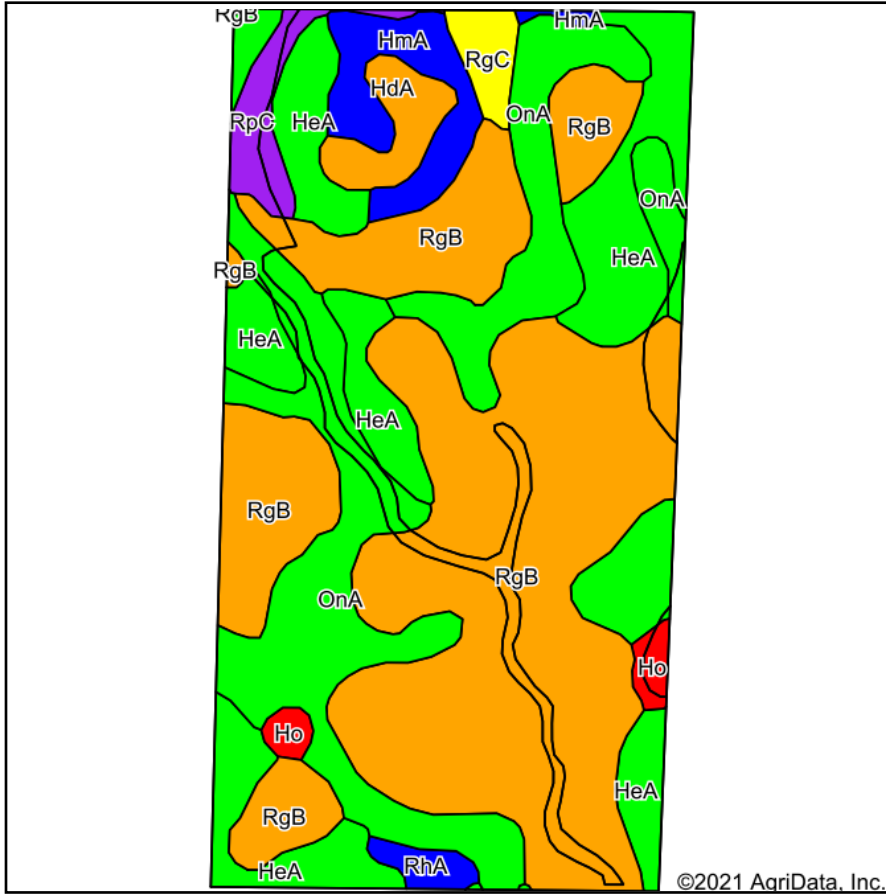
Farm 4758

3-114N-76W-Sully

United States Department of Agriculture (USDA) Farm Service Agency (FSA) maps are for FSA Program administration only. This map does not represent a legal survey or reflect actual ownership; rather it depicts the information provided directly from the producer and/or National Agricultural Imagery Program (NAIP) imagery. The producer accepts the data 'as is' and assumes all risks associated with its use. USDA-FSA assumes no responsibility for actual or consequential damage incurred as a result of any user's reliance on this data outside FSA Programs. Wetland identifiers do not represent the size, shape, or specific determination of the area. Refer to your original determination (CPA-026 and attached maps) for exact boundaries and determinations or contact USDA Natural Resources Conservation Service (NRCS).

TRACT 6

Soils Map



State: **South Dakota**
County: **Sully**
Location: **3-114N-76W**
Township: **East Sully**
Acres: **311.74**
Date: **10/10/2021**



Maps Provided By:



Soils data provided by USDA and NRCS.

Area Symbol: SD119, Soil Area Version: 23

Code	Soil Description	Acres	Percent of field	PI Legend	Non-Irr Class *c	Productivity Index	*n NCCPI Soybeans
RgB	Eakin-Raber complex, 2 to 6 percent slopes	148.04	47.5%		Ile	76	53
OnA	Mobridge silt loam, 0 to 2 percent slopes	65.11	20.9%		IIc	94	59
HeA	Highmore silt loam, 0 to 2 percent slopes	60.38	19.4%		IIc	92	57
HmA	Highmore-Walke silt loams, 0 to 2 percent slopes	13.39	4.3%		IIc	85	62
HdA	Highmore-DeGrey silt loams, 0 to 2 percent slopes	7.16	2.3%		IIc	76	48
RpC	Raber-Peno loams, 6 to 9 percent slopes	6.84	2.2%		IIIe	52	51
RgC	Raber-Eakin complex, 6 to 9 percent slopes	4.40	1.4%		IIIe	61	51
Ho	Hoven silt loam, 0 to 1 percent slopes	3.64	1.2%		VIIs	15	5
RhA	Eakin-Raber complex, 0 to 2 percent slopes	2.78	0.9%		IIc	83	54
Weighted Average					2.08	81.9	*n 54.7

*n: The aggregation method is "Weighted Average using all components"

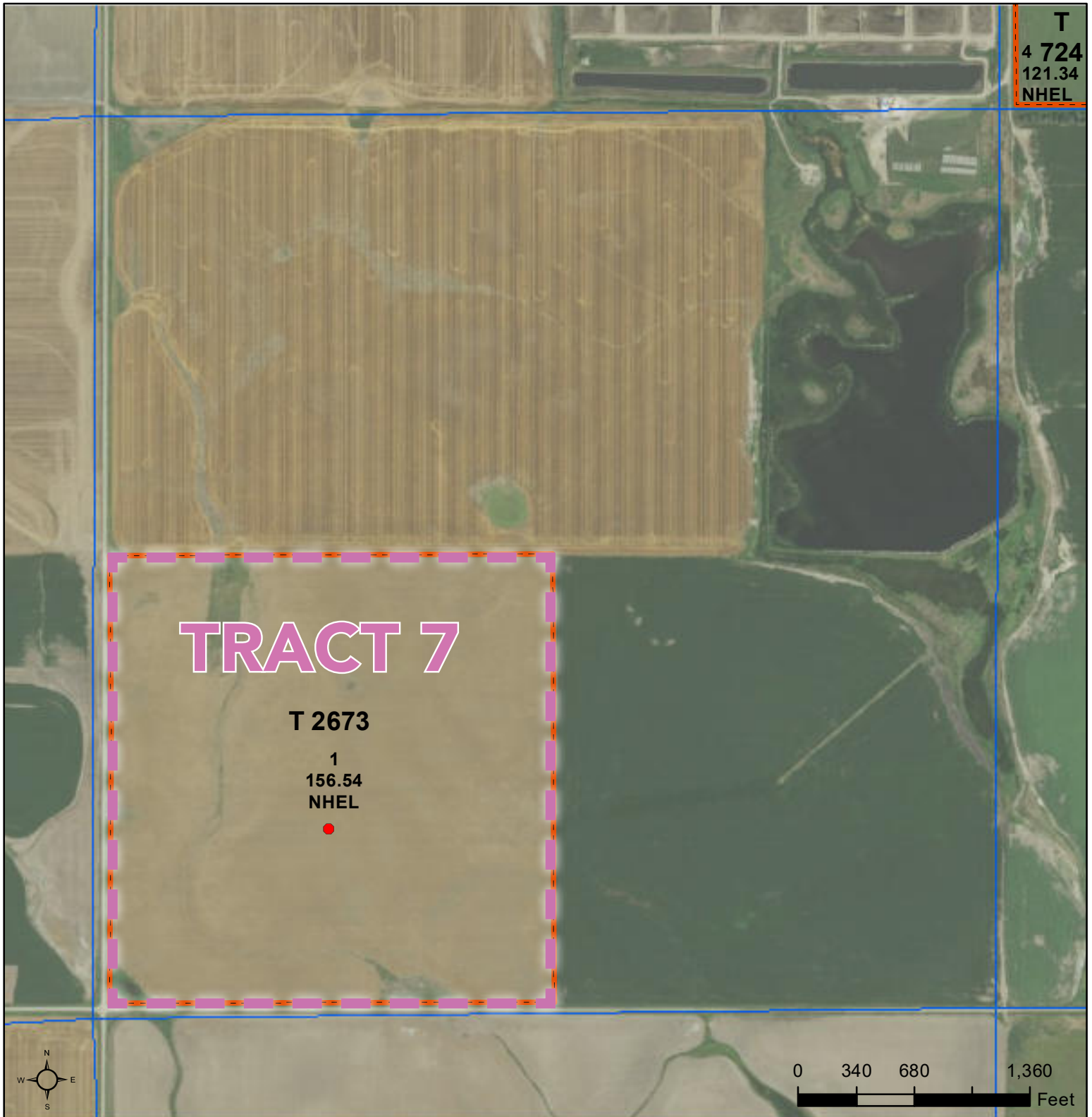
*c: Using Capabilities Class Dominant Condition Aggregation Method

Soils data provided by USDA and NRCS.



United States
Department of
Agriculture

Sully County, South Dakota



Common Land Unit PLSS

- Cropland
- Tract Boundary

Wetland Determination Identifiers

- Restricted Use
- ▼ Limited Restrictions
- Exempt from Conservation
- Compliance Provisions

2022 Program Year

Map Created September 28, 2021

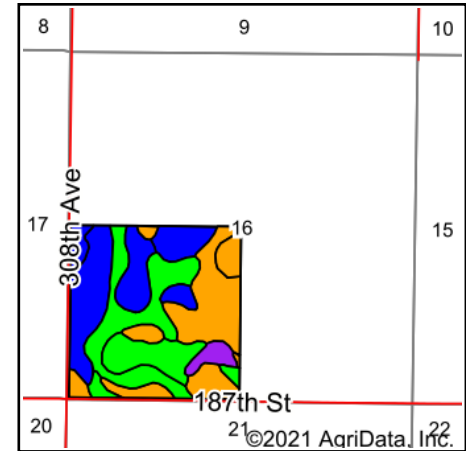
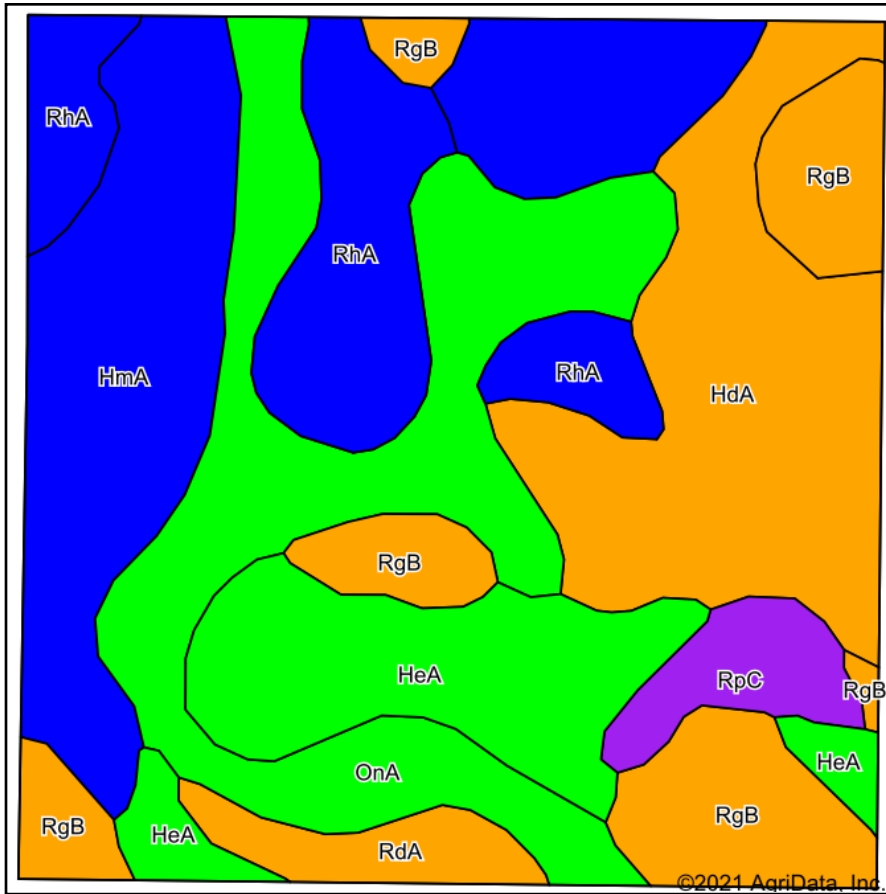
Farm 4758

16-114N-76W-Sully

United States Department of Agriculture (USDA) Farm Service Agency (FSA) maps are for FSA Program administration only. This map does not represent a legal survey or reflect actual ownership; rather it depicts the information provided directly from the producer and/or National Agricultural Imagery Program (NAIP) imagery. The producer accepts the data 'as is' and assumes all risks associated with its use. USDA-FSA assumes no responsibility for actual or consequential damage incurred as a result of any user's reliance on this data outside FSA Programs. Wetland identifiers do not represent the size, shape, or specific determination of the area. Refer to your original determination (CPA-026 and attached maps) for exact boundaries and determinations or contact USDA Natural Resources Conservation Service (NRCS).

TRACT 7

Soils Map



State: **South Dakota**
 County: **Sully**
 Location: **16-114N-76W**
 Township: **East Sully**
 Acres: **156.54**
 Date: **10/10/2021**



Maps Provided By:

 CUSTOMIZED ONLINE MAPPING
 © AgriData, Inc. 2021 www.AgriDataInc.com



Soils data provided by USDA and NRCS.

Area Symbol: SD119, Soil Area Version: 23

Code	Soil Description	Acres	Percent of field	PI Legend	Non-Irr Class *c	Productivity Index	Alfalfa hay Tons	Brome grass alfalfa AUM	Corn Bu	Flax Bu	Grain sorghum Bu	Oats Bu	Spring wheat Bu	*n NCCPI Soybeans
OnA	Mobridge silt loam, 0 to 2 percent slopes	33.02	21.1%		IIc	94								59
HmA	Highmore-Walke silt loams, 0 to 2 percent slopes	31.70	20.3%		IIc	85								62
HdA	Highmore-DeGrey silt loams, 0 to 2 percent slopes	26.64	17.0%		IIc	76								48
HeA	Highmore silt loam, 0 to 2 percent slopes	19.01	12.1%		IIc	92								57
RgB	Eakin-Raber complex, 2 to 6 percent slopes	18.92	12.1%		Ile	76								53
RhA	Eakin-Raber complex, 0 to 2 percent slopes	18.16	11.6%		IIc	83								54
RpC	Raber-Peno loams, 6 to 9 percent slopes	4.85	3.1%		IIIe	52								51
RdA	Raber-Demky loams, 0 to 2 percent slopes	4.24	2.7%		IIc	75	2	3.3	33	15	48	49	24	40
Weighted Average					2.03	83.6	0.1	0.1	0.9	0.4	1.3	1.3	0.7	*n 55.4

*n: The aggregation method is "Weighted Average using all components"

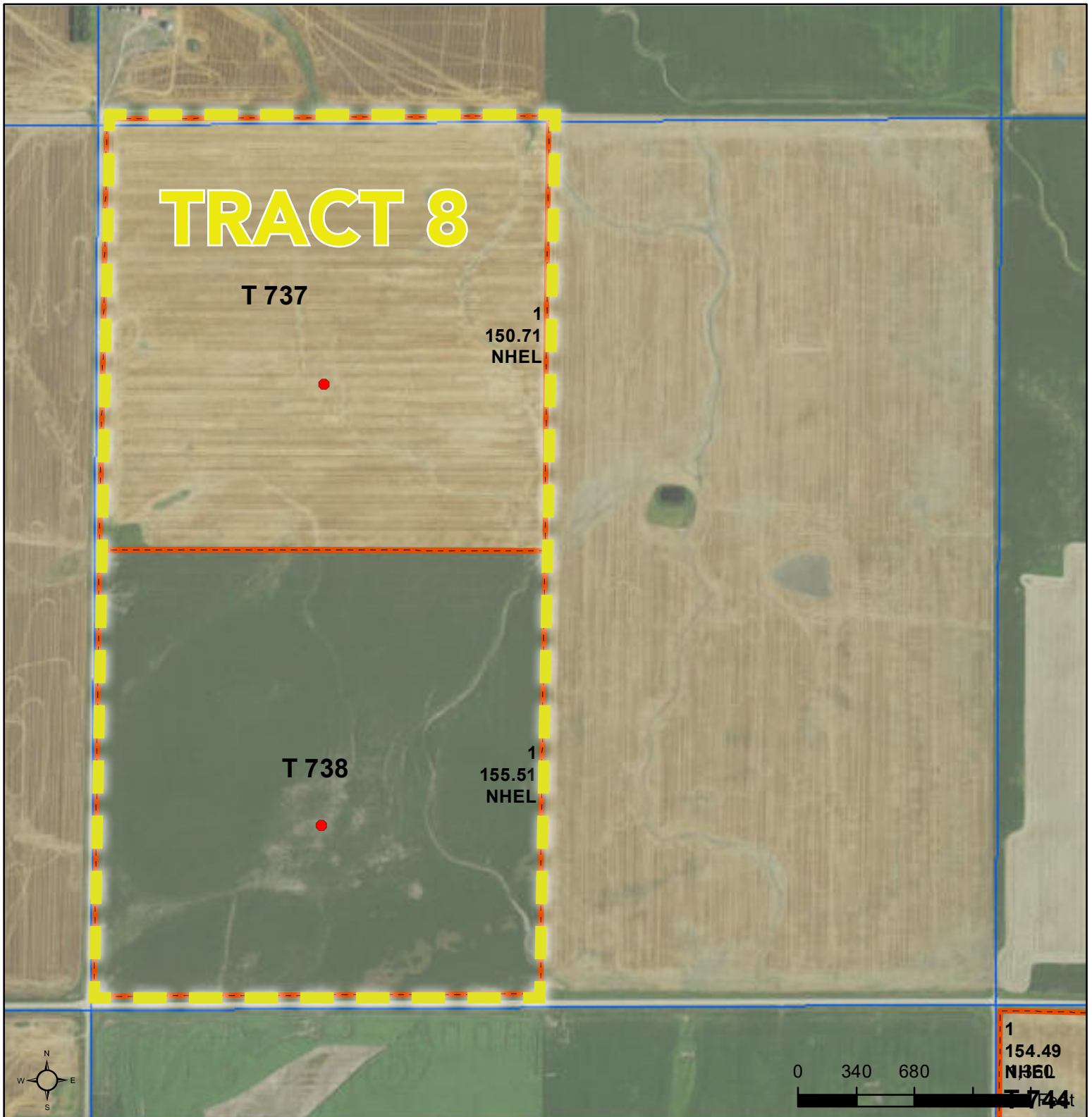
*c: Using Capabilities Class Dominant Condition Aggregation Method

Soils data provided by USDA and NRCS.



United States
Department of
Agriculture

Sully County, South Dakota



Common Land Unit PLSS

- Cropland
- Tract Boundary

Wetland Determination Identifiers

- Restricted Use
- ▼ Limited Restrictions
- Exempt from Conservation Compliance Provisions

United States Department of Agriculture (USDA) Farm Service Agency (FSA) maps are for FSA Program administration only. This map does not represent a legal survey or reflect actual ownership; rather it depicts the information provided directly from the producer and/or National Agricultural Imagery Program (NAIP) imagery. The producer accepts the data 'as is' and assumes all risks associated with its use. USDA-FSA assumes no responsibility for actual or consequential damage incurred as a result of any user's reliance on this data outside FSA Programs. Wetland identifiers do not represent the size, shape, or specific determination of the area. Refer to your original determination (CPA-026 and attached maps) for exact boundaries and determinations or contact USDA Natural Resources Conservation Service (NRCS).

2022 Program Year

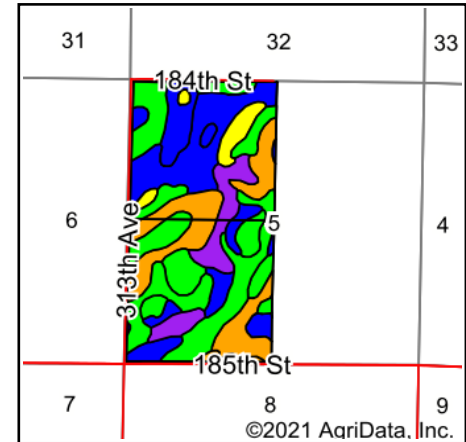
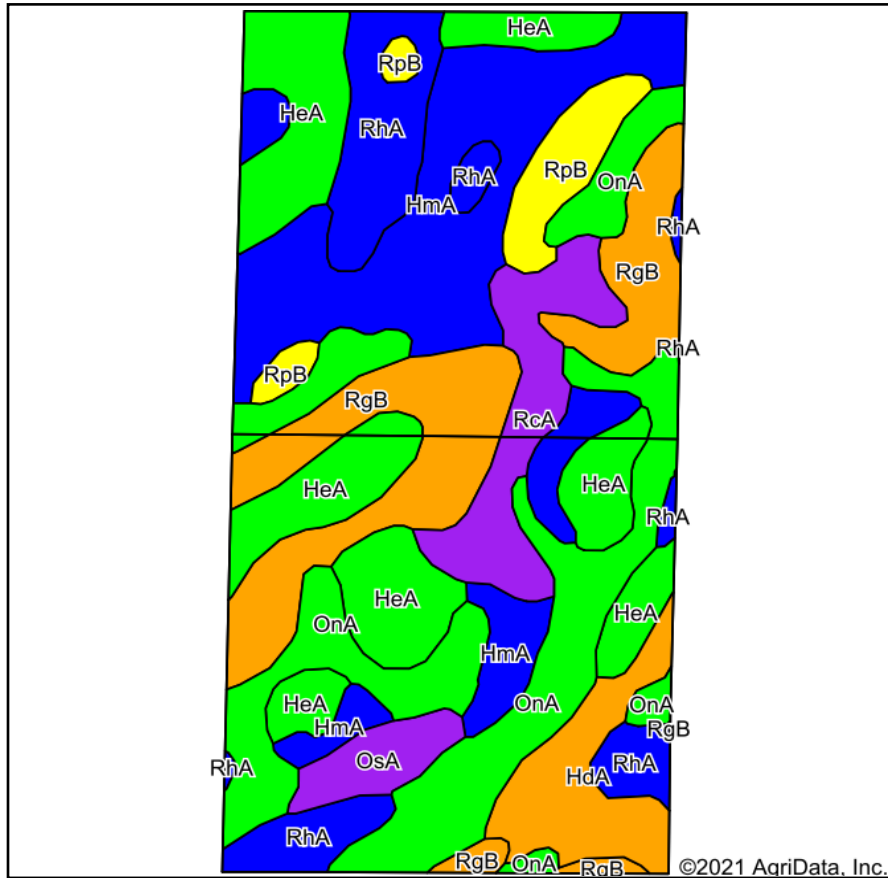
Map Created September 28, 2021

Farm 4758

5-114N-75W-Sully

TRACT 8

Soils Map



State: **South Dakota**
 County: **Sully**
 Location: **5-114N-75W**
 Township: **East Sully**
 Acres: **306.22**
 Date: **10/10/2021**



Maps Provided By:



Soils data provided by USDA and NRCS.

Area Symbol: SD119, Soil Area Version: 23

Code	Soil Description	Acres	Percent of field	PI Legend	Non-Irr Class *c	Productivity Index	Alfalfa hay Tons	Bromegrass alfalfa AUM	Corn Bu	Grain sorghum Bu	Oats Bu	Spring wheat Bu	Winter wheat Bu	*n NCCPI Soybeans
OnA	Mobridge silt loam, 0 to 2 percent slopes	61.36	20.0%		IIc	94								59
HmA	Highmore-Walke silt loams, 0 to 2 percent slopes	55.89	18.3%		IIc	85								62
HeA	Highmore silt loam, 0 to 2 percent slopes	55.47	18.1%		IIc	92								57
RgB	Eakin-Raber complex, 2 to 6 percent slopes	43.99	14.4%		Ile	76								53
RhA	Eakin-Raber complex, 0 to 2 percent slopes	34.03	11.1%		IIc	83								54
RcA	Raber-Cavo loams, 0 to 2 percent slopes	19.27	6.3%		IIc	60								42
HdA	Highmore-DeGrey silt loams, 0 to 2 percent slopes	16.52	5.4%		IIc	76								48
RpB	Raber-Peno loams, 2 to 6 percent slopes	12.28	4.0%		Ile	65								51
OsA	Onita-Hoven silt loams, 0 to 1 percent slopes	7.41	2.4%		IIc	59	2.8	4.7	60	63	63	29	35	32
Weighted Average					2.00	83.1	0.1	0.1	1.5	1.5	1.5	0.7	0.8	*n 55.1

*n: The aggregation method is "Weighted Average using all components"

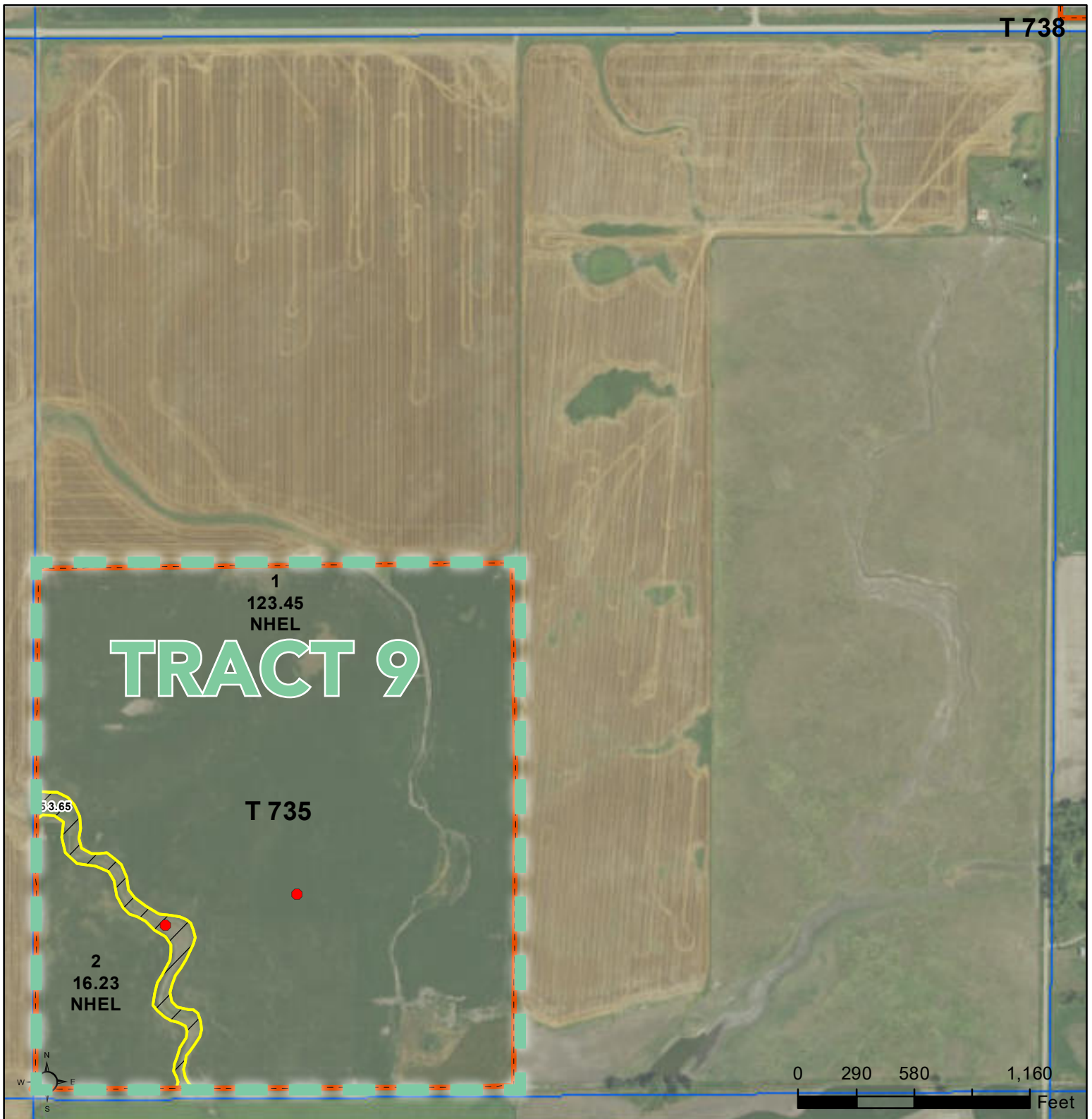
*c: Using Capabilities Class Dominant Condition Aggregation Method

Soils data provided by USDA and NRCS.



United States
Department of
Agriculture

Sully County, South Dakota



Common Land Unit

	Tract Boundary
	PLSS
	Non-Cropland
	Cropland

Wetland Determination Identifiers

- Restricted Use
- Limited Restrictions
- Exempt from Conservation Compliance Provisions

2022 Program Year
Map Created September 28, 2021

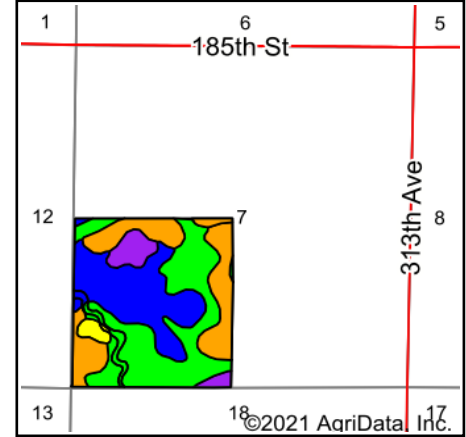
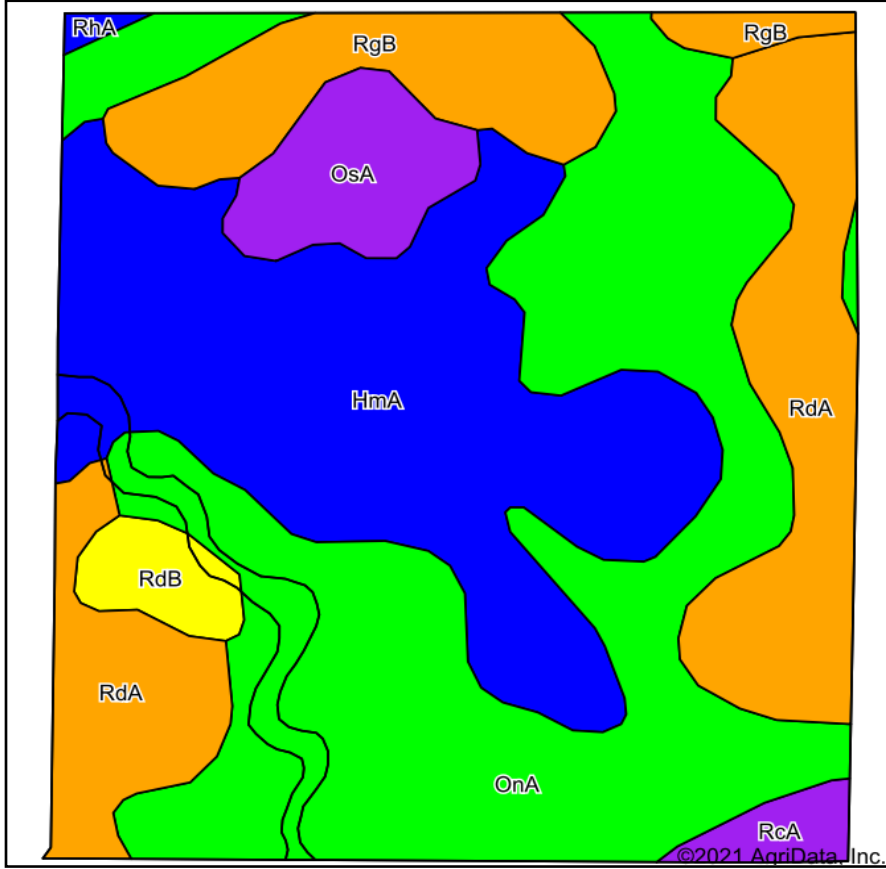
Farm 4758

7-114N-75W-Sully

United States Department of Agriculture (USDA) Farm Service Agency (FSA) maps are for FSA Program administration only. This map does not represent a legal survey or reflect actual ownership; rather it depicts the information provided directly from the producer and/or National Agricultural Imagery Program (NAIP) imagery. The producer accepts the data 'as is' and assumes all risks associated with its use. USDA-FSA assumes no responsibility for actual or consequential damage incurred as a result of any user's reliance on this data outside FSA Programs. Wetland identifiers do not represent the size, shape, or specific determination of the area. Refer to your original determination (CPA-026 and attached maps) for exact boundaries and determinations or contact USDA Natural Resources Conservation Service (NRCS).

TRACT 9

Soils Map



State: **South Dakota**
 County: **Sully**
 Location: **7-114N-75W**
 Township: **East Sully**
 Acres: **143.33**
 Date: **10/10/2021**



Maps Provided By:



Soils data provided by USDA and NRCS.

Area Symbol: SD119, Soil Area Version: 23

Code	Soil Description	Acres	Percent of field	PI Legend	Non-Irr Class *c	Productivity Index	Alfalfa hay Tons	Bromegrass alfalfa AUM	Corn Bu	Flax Bu	Grain sorghum Bu	Oats Bu	Spring wheat Bu	Winter wheat Bu	*n NCCPI Soybeans
OnA	Mobridge silt loam, 0 to 2 percent slopes	54.55	38.1%		IIc	94									59
HmA	Highmore-Walke silt loams, 0 to 2 percent slopes	40.70	28.4%		IIc	85									62
RdA	Raber-Demky loams, 0 to 2 percent slopes	23.67	16.5%		IIc	75	2	3.3	33	15	48	49	24		40
RgB	Eakin-Raber complex, 2 to 6 percent slopes	12.24	8.5%		Ile	76									53
OsA	Onita-Hoven silt loams, 0 to 1 percent slopes	6.68	4.7%		IIc	59	2.8	4.7	60		63	63	29	35	32
RdB	Raber-Demky loams, 2 to 5 percent slopes	3.05	2.1%		Ile	66	2	3.3	32	12	44	48	23		41
RcA	Raber-Cavo loams, 0 to 2 percent slopes	2.04	1.4%		IIc	60									42
RhA	Eakin-Raber complex, 0 to 2 percent slopes	0.40	0.3%		IIc	83									54
Weighted Average					2.00	84	0.5	0.8	8.9	2.7	11.8	12	5.8	1.6	*n 54.3

*n: The aggregation method is "Weighted Average using all components"

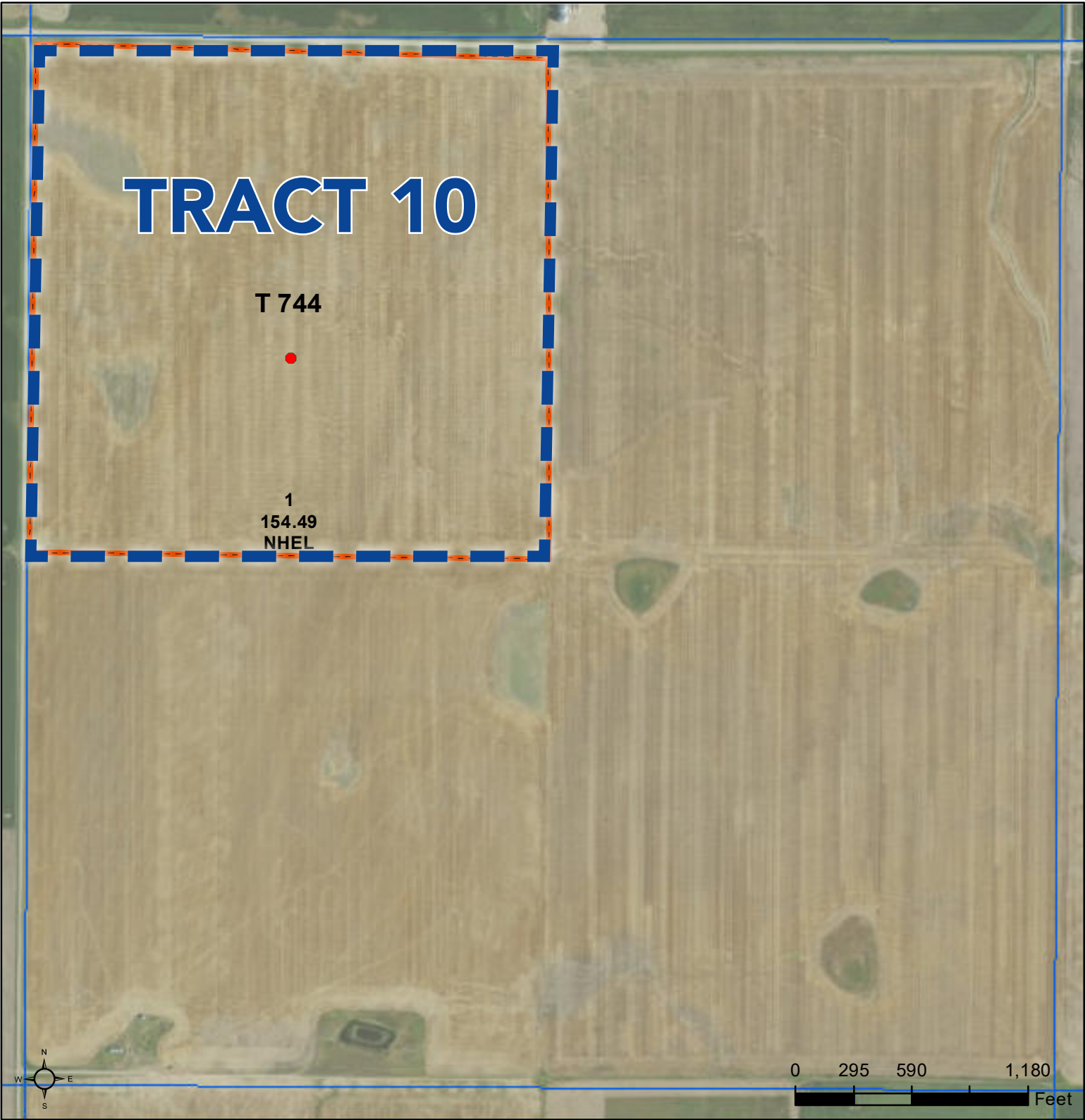
*c: Using Capabilities Class Dominant Condition Aggregation Method

Soils data provided by USDA and NRCS.



United States
Department of
Agriculture

Sully County, South Dakota



Common Land Unit PLSS

 Cropland

 Tract Boundary

Wetland Determination Identifiers

- Restricted Use
- ▼ Limited Restrictions
- Exempt from Conservation
- Compliance Provisions

2022 Program Year

Map Created September 28, 2021

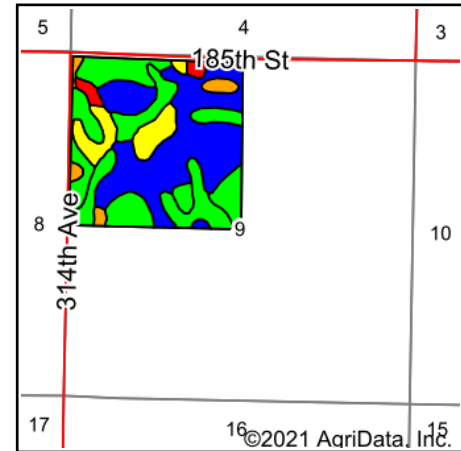
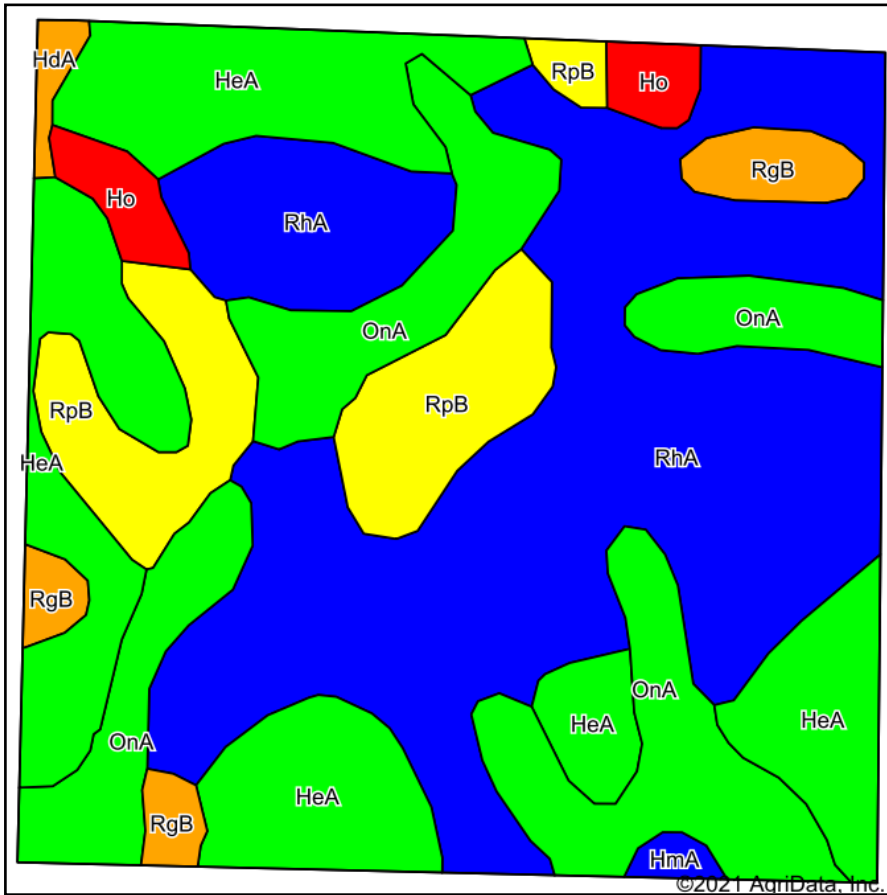
Farm 4758

9-114N-75W-Sully

United States Department of Agriculture (USDA) Farm Service Agency (FSA) maps are for FSA Program administration only. This map does not represent a legal survey or reflect actual ownership; rather it depicts the information provided directly from the producer and/or National Agricultural Imagery Program (NAIP) imagery. The producer accepts the data 'as is' and assumes all risks associated with its use. USDA-FSA assumes no responsibility for actual or consequential damage incurred as a result of any user's reliance on this data outside FSA Programs. Wetland identifiers do not represent the size, shape, or specific determination of the area. Refer to your original determination (CPA-026 and attached maps) for exact boundaries and determinations or contact USDA Natural Resources Conservation Service (NRCS).

TRACT 10

Soils Map



State: **South Dakota**
 County: **Sully**
 Location: **9-114N-75W**
 Township: **East Sully**
 Acres: **154.49**
 Date: **10/10/2021**



Maps Provided By:



Soils data provided by USDA and NRCS.

Area Symbol: SD119, Soil Area Version: 23							
Code	Soil Description	Acres	Percent of field	PI Legend	Non-Irr Class *c	Productivity Index	*n NCCPI Soybeans
RhA	Eakin-Raber complex, 0 to 2 percent slopes	64.17	41.5%		IIc	83	54
HeA	Highmore silt loam, 0 to 2 percent slopes	36.42	23.6%		IIc	92	57
OnA	Mobridge silt loam, 0 to 2 percent slopes	28.55	18.5%		IIc	94	59
RpB	Raber-Peno loams, 2 to 6 percent slopes	15.48	10.0%		Ile	65	51
RgB	Eakin-Raber complex, 2 to 6 percent slopes	4.60	3.0%		Ile	76	53
Ho	Hoven silt loam, 0 to 1 percent slopes	3.60	2.3%		VIIs	15	5
HdA	Highmore-DeGrey silt loams, 0 to 2 percent slopes	0.95	0.6%		IIc	76	48
HmA	Highmore-Walke silt loams, 0 to 2 percent slopes	0.72	0.5%		IIc	85	62
Weighted Average					2.09	83.5	*n 54.2

*n: The aggregation method is "Weighted Average using all components"

*c: Using Capabilities Class Dominant Condition Aggregation Method

Soils data provided by USDA and NRCS.

SOUTH DAKOTA
SULLY

Form: FSA-156EZ

See Page 8 for non-discriminatory Statements.



United States Department of Agriculture
Farm Service Agency

Abbreviated 156 Farm Record

FARM : 4758

Prepared : 6/7/21 8:52 AM

Crop Year : 2021

Operator Name : MAYNARD KLINGBEIL TRUST
Farms Associated with Operator : 46-119-4758
CRP Contract Number(s) : None
Recon ID : 46-119-2017-27
Transferred From : None
ARCPLC G//F Eligibility : Eligible

Farm Land Data

Farmland	Cropland	DCP Cropland	WBP	WRP	CRP	GRP	Sugarcane	Farm Status	Number Of Tracts
2,311.23	2,215.47	2,215.47	0.00	0.00	0.00	0.00	0.00	Active	10
State Conservation	Other Conservation	Effective DCP Cropland	Double Cropped		MPL	Acre Election	EWP	DCP Ag.Rel. Activity	Broken From Native Sod
0.00	0.00	2,215.47	0.00		0.00		0.00	0.00	0.00

Crop Election Choice

ARC Individual	ARC County	Price Loss Coverage
None	None	WHEAT, CORN, SNFLR

DCP Crop Data

Crop Name	Base Acres	CCC-505 CRP Reduction Acres	PLC Yield	HIP
Wheat	910.28	0.00	49	
Corn	456.18	0.00	99	
Sunflowers	372.04	0.00	1538	
TOTAL	1738.50	0.00		

NOTES

Tract Number : 724

Description : E-3; 10-114-76
FSA Physical Location : SOUTH DAKOTA/SULLY
ANSI Physical Location : SOUTH DAKOTA/SULLY
BIA Unit Range Number :
HEL Status : NHEL: No agricultural commodity planted on undetermined fields
Wetland Status : Tract contains a wetland or farmed wetland
WL Violations : None
Owners : MAYNARD KLINGBEIL TRUST
Other Producers :
Recon ID : None

Tract Land Data

Farm Land	Cropland	DCP Cropland	WBP	WRP	CRP	GRP	Sugarcane
936.53	890.35	890.35	0.00	0.00	0.00	0.00	0.00
State Conservation	Other Conservation	Effective DCP Cropland	Double Cropped	MPL	EWP	DCP Ag. Rel Activity	Broken From Native Sod
0.00	0.00	890.35	0.00	0.00	0.00	0.00	0.00

SOUTH DAKOTA
SULLY
Form: FSA-156EZ



United States Department of Agriculture
Farm Service Agency

Abbreviated 156 Farm Record

FARM : 4758
Prepared : 6/7/21 8:52 AM
Crop Year : 2021

DCP Crop Data

Tract 724 Continued ...

Crop Name	Base Acres	CCC-505 CRP Reduction Acres	PLC Yield
Wheat	383.51	0.00	49
Corn	192.19	0.00	99
Sunflowers	156.74	0.00	1538
TOTAL	732.44	0.00	

NOTES

Tract Number : 727

Description : SE-11-114-76
FSA Physical Location : SOUTH DAKOTA/SULLY
ANSI Physical Location : SOUTH DAKOTA/SULLY
BIA Unit Range Number :
HEL Status : HEL determinations not completed for all fields on the tract
Wetland Status : Tract contains a wetland or farmed wetland
WL Violations : None
Owners : MAYNARD KLINGBEIL TRUST
Other Producers :
Recon ID : None

Tract Land Data

Farm Land	Cropland	DCP Cropland	WBP	WRP	CRP	GRP	Sugarcane
160.12	153.94	153.94	0.00	0.00	0.00	0.00	0.00
State Conservation	Other Conservation	Effective DCP Cropland	Double Cropped	MPL	EWP	DCP Ag. Rel Activity	Broken From Native Sod
0.00	0.00	153.94	0.00	0.00	0.00	0.00	0.00

DCP Crop Data

Crop Name	Base Acres	CCC-505 CRP Reduction Acres	PLC Yield
Wheat	66.45	0.00	49
Corn	33.30	0.00	99
Sunflowers	27.16	0.00	1538
TOTAL	126.91	0.00	

NOTES

SOUTH DAKOTA
SULLY
Form: FSA-156EZ



United States Department of Agriculture
Farm Service Agency

Abbreviated 156 Farm Record

FARM : 4758
Prepared : 6/7/21 8:52 AM
Crop Year : 2021

Tract Number : 735

Description : SW-7-114-75
FSA Physical Location : SOUTH DAKOTA/SULLY
ANSI Physical Location : SOUTH DAKOTA/SULLY
BIA Unit Range Number :
HEL Status : HEL determinations not completed for all fields on the tract
Wetland Status : Tract contains a wetland or farmed wetland
WL Violations : None
Owners : MAYNARD KLINGBEIL TRUST
Other Producers :
Recon ID : None

Tract Land Data

Farm Land	Cropland	DCP Cropland	WBP	WRP	CRP	GRP	Sugarcane
143.33	139.68	139.68	0.00	0.00	0.00	0.00	0.00
State Conservation	Other Conservation	Effective DCP Cropland	Double Cropped	MPL	EWP	DCP Ag. Rel Activity	Broken From Native Sod
0.00	0.00	139.68	0.00	0.00	0.00	0.00	0.00

DCP Crop Data

Crop Name	Base Acres	CCC-505 CRP Reduction Acres	PLC Yield
Wheat	60.35	0.00	49
Corn	30.24	0.00	99
Sunflowers	24.67	0.00	1538
TOTAL	115.26	0.00	

NOTES

Tract Number : 737

Description : NW-5-114-75
FSA Physical Location : SOUTH DAKOTA/SULLY
ANSI Physical Location : SOUTH DAKOTA/SULLY
BIA Unit Range Number :
HEL Status : NHEL: No agricultural commodity planted on undetermined fields
Wetland Status : Tract contains a wetland or farmed wetland
WL Violations : None
Owners : MAYNARD KLINGBEIL TRUST
Other Producers : None
Recon ID : None

Tract Land Data

Farm Land	Cropland	DCP Cropland	WBP	WRP	CRP	GRP	Sugarcane
150.71	150.71	150.71	0.00	0.00	0.00	0.00	0.00
State Conservation	Other Conservation	Effective DCP Cropland	Double Cropped	MPL	EWP	DCP Ag. Rel Activity	Broken From Native Sod
0.00	0.00	150.71	0.00	0.00	0.00	0.00	0.00

SOUTH DAKOTA
SULLY
Form: FSA-156EZ



United States Department of Agriculture
Farm Service Agency

Abbreviated 156 Farm Record

FARM : 4758

Prepared : 6/7/21 8:52 AM

Crop Year : 2021

DCP Crop Data

Tract 737 Continued ...

Crop Name	Base Acres	CCC-505 CRP Reduction Acres	PLC Yield
Wheat	65.09	0.00	49
Corn	32.62	0.00	99
Sunflowers	26.60	0.00	1538
TOTAL	124.31	0.00	

NOTES

Tract Number : 738

Description : SW-5-114-75
FSA Physical Location : SOUTH DAKOTA/SULLY
ANSI Physical Location : SOUTH DAKOTA/SULLY
BIA Unit Range Number :
HEL Status : NHEL: No agricultural commodity planted on undetermined fields
Wetland Status : Tract contains a wetland or farmed wetland
WL Violations : None
Owners : MAYNARD KLINGBEIL TRUST
Other Producers : None
Recon ID : None

Tract Land Data

Farm Land	Cropland	DCP Cropland	WBP	WRP	CRP	GRP	Sugarcane
155.51	155.51	155.51	0.00	0.00	0.00	0.00	0.00
State Conservation	Other Conservation	Effective DCP Cropland	Double Cropped	MPL	EWP	DCP Ag. Rel Activity	Broken From Native Sod
0.00	0.00	155.51	0.00	0.00	0.00	0.00	0.00

DCP Crop Data

Crop Name	Base Acres	CCC-505 CRP Reduction Acres	PLC Yield
Wheat	67.18	0.00	49
Corn	33.67	0.00	99
Sunflowers	27.46	0.00	1538
TOTAL	128.31	0.00	

NOTES

SOUTH DAKOTA
SULLY
Form: FSA-156EZ



United States Department of Agriculture
Farm Service Agency

Abbreviated 156 Farm Record

FARM : 4758
Prepared : 6/7/21 8:52 AM
Crop Year : 2021

Tract Number : 744
Description : NW-9-114-75
FSA Physical Location : SOUTH DAKOTA/SULLY
ANSI Physical Location : SOUTH DAKOTA/SULLY
BIA Unit Range Number :
HEL Status : NHEL: No agricultural commodity planted on undetermined fields
Wetland Status : Tract contains a wetland or farmed wetland
WL Violations : None
Owners : MAYNARD KLINGBEIL TRUST
Other Producers : None
Recon ID : None

Tract Land Data

Farm Land	Cropland	DCP Cropland	WBP	WRP	CRP	GRP	Sugarcane
154.49	154.49	154.49	0.00	0.00	0.00	0.00	0.00
State Conservation	Other Conservation	Effective DCP Cropland	Double Cropped	MPL	EWP	DCP Ag. Rel Activity	Broken From Native Sod
0.00	0.00	154.49	0.00	0.00	0.00	0.00	0.00

DCP Crop Data

Crop Name	Base Acres	CCC-505 CRP Reduction Acres	PLC Yield
Wheat	66.72	0.00	49
Corn	33.44	0.00	99
Sunflowers	27.27	0.00	1538
TOTAL	127.43	0.00	

NOTES

Tract Number : 2673
Description : SW-16-114-76
FSA Physical Location : SOUTH DAKOTA/SULLY
ANSI Physical Location : SOUTH DAKOTA/SULLY
BIA Unit Range Number :
HEL Status : NHEL: No agricultural commodity planted on undetermined fields
Wetland Status : Tract contains a wetland or farmed wetland
WL Violations : None
Owners : MAYNARD KLINGBEIL TRUST
Other Producers : None
Recon ID : None

Tract Land Data

Farm Land	Cropland	DCP Cropland	WBP	WRP	CRP	GRP	Sugarcane
156.54	156.54	156.54	0.00	0.00	0.00	0.00	0.00
State Conservation	Other Conservation	Effective DCP Cropland	Double Cropped	MPL	EWP	DCP Ag. Rel Activity	Broken From Native Sod
0.00	0.00	156.54	0.00	0.00	0.00	0.00	0.00

SOUTH DAKOTA
SULLY
Form: FSA-156EZ



United States Department of Agriculture
Farm Service Agency

Abbreviated 156 Farm Record

FARM : 4758

Prepared : 6/7/21 8:52 AM

Crop Year : 2021

DCP Crop Data

Tract 2673 Continued ...

Crop Name	Base Acres	CCC-505 CRP Reduction Acres	PLC Yield
Wheat	67.63	0.00	49
Corn	33.89	0.00	99
Sunflowers	27.64	0.00	1538
TOTAL	129.16	0.00	

NOTES

Tract Number : 4928

Description : W-2-114-76 less 202.9ac grass
FSA Physical Location : SOUTH DAKOTA/SULLY
ANSI Physical Location : SOUTH DAKOTA/SULLY
BIA Unit Range Number :
HEL Status : NHEL: No agricultural commodity planted on undetermined fields
Wetland Status : Tract contains a wetland or farmed wetland
WL Violations : None
Owners : MAYNARD KLINGBEIL TRUST
Other Producers : None
Recon ID : 46-119-2017-25

Tract Land Data

Farm Land	Cropland	DCP Cropland	WBP	WRP	CRP	GRP	Sugarcane
105.57	68.54	68.54	0.00	0.00	0.00	0.00	0.00
State Conservation	Other Conservation	Effective DCP Cropland	Double Cropped	MPL	EWP	DCP Ag. Rel Activity	Broken From Native Sod
0.00	0.00	68.54	0.00	0.00	0.00	0.00	0.00

DCP Crop Data

Crop Name	Base Acres	CCC-505 CRP Reduction Acres	PLC Yield
Wheat	29.58	0.00	49
Corn	14.83	0.00	99
Sunflowers	12.09	0.00	1538
TOTAL	56.50	0.00	

NOTES

SOUTH DAKOTA
SULLY
Form: FSA-156EZ



United States Department of Agriculture
Farm Service Agency

Abbreviated 156 Farm Record

FARM : 4758

Prepared : 6/7/21 8:52 AM

Crop Year : 2021

Tract Number : 4990

Description : NE4 11-114-76

FSA Physical Location : SOUTH DAKOTA/SULLY

ANSI Physical Location : SOUTH DAKOTA/SULLY

BIA Unit Range Number :

HEL Status : NHEL: No agricultural commodity planted on undetermined fields

Wetland Status : Tract contains a wetland or farmed wetland

WL Violations : None

Owners : MAYNARD KLINGBEIL TRUST

Other Producers :

Recon ID : 46-119-2018-6

Tract Land Data

Farm Land	Cropland	DCP Cropland	WBP	WRP	CRP	GRP	Sugarcane
105.42	105.42	105.42	0.00	0.00	0.00	0.00	0.00
State Conservation	Other Conservation	Effective DCP Cropland	Double Cropped	MPL	EWP	DCP Ag. Rel Activity	Broken From Native Sod
0.00	0.00	105.42	0.00	0.00	0.00	0.00	0.00

DCP Crop Data

Crop Name	Base Acres	CCC-505 CRP Reduction Acres	PLC Yield
Wheat	31.64	0.00	49
Corn	15.86	0.00	99
Sunflowers	12.93	0.00	1538

TOTAL 60.43 0.00

NOTES

Tract Number : 4991

Description : W2 11-114-76

FSA Physical Location : SOUTH DAKOTA/SULLY

ANSI Physical Location : SOUTH DAKOTA/SULLY

BIA Unit Range Number :

HEL Status : NHEL: No agricultural commodity planted on undetermined fields

Wetland Status : Tract contains a wetland or farmed wetland

WL Violations : None

Owners : MAYNARD KLINGBEIL TRUST

Other Producers :

Recon ID : 46-119-2018-6

Tract Land Data

Farm Land	Cropland	DCP Cropland	WBP	WRP	CRP	GRP	Sugarcane
243.01	240.29	240.29	0.00	0.00	0.00	0.00	0.00
State Conservation	Other Conservation	Effective DCP Cropland	Double Cropped	MPL	EWP	DCP Ag. Rel Activity	Broken From Native Sod
0.00	0.00	240.29	0.00	0.00	0.00	0.00	0.00

SOUTH DAKOTA
SULLY
Form: FSA-156EZ



United States Department of Agriculture
Farm Service Agency

Abbreviated 156 Farm Record

FARM : 4758

Prepared : 6/7/21 8:52 AM

Crop Year : 2021

DCP Crop Data

Tract 4991 Continued ...

Crop Name	Base Acres	CCC-505 CRP Reduction Acres	PLC Yield
Wheat	72.13	0.00	49
Corn	36.14	0.00	99
Sunflowers	29.48	0.00	1538
TOTAL	137.75	0.00	

NOTES

In accordance with Federal civil rights law and U.S. Department of Agriculture (USDA) civil rights regulations and policies, the USDA, its Agencies, offices, and employees, and institutions participating in or administering USDA programs are prohibited from discriminating based on race, color, national origin, religion, sex, gender identity (including gender expression), sexual orientation, disability, age, marital status, family/parental status, income derived from a public assistance program, political beliefs, or reprisal or retaliation for prior civil rights activity, in any program or activity conducted or funded by USDA (not all bases apply to all programs). Remedies and complaint filing deadlines vary by program or incident.

Persons with disabilities who require alternative means of communication for program information (e.g., Braille, large print, audiotape, American Sign Language, etc.) should contact the responsible Agency or USDA's TARGET Center at (202) 720-2600 (voice and TTY) or contact USDA through the Federal Relay Service at (800) 877-8339. Additionally, program information may be made available in languages other than English.

To file a program discrimination complaint, complete the USDA Program Discrimination Complaint Form, AD-3027, found online at http://www.ascr.usda.gov/complaint_filing_cust.html and at any USDA office or write a letter addressed to USDA and provide in the letter all of the information requested in the form. To request a copy of the complaint form, call (866) 632-9992. Submit your completed form or letter to USDA by: (1) mail: U.S. Department of Agriculture Office of the Assistant Secretary for Civil Rights 1400 Independence Avenue, SW Washington, D.C. 20250-9410; (2) fax: (202) 690-7442; or (3) e-mail: program.intake@usda.gov. USDA is an equal opportunity provider, employer, and lender.